

# Long-term persistence of GM oilseed rape in the seedbank

Tina D'Hertefeldt<sup>1,\*</sup>, Rikke B. Jørgensen<sup>2</sup> and Lars B. Pettersson<sup>1</sup>

<sup>1</sup>Department of Ecology, Lund University, 223 62 Lund, Sweden

<sup>2</sup>Risø National Laboratory for Sustainable Energy, Technical University of Denmark, 4000 Roskilde, Denmark

\*Author for correspondence (tina.dhertefeldt@ekol.lu.se).

**Coexistence between genetically modified (GM) and non-GM plants is a field of rapid development and considerable controversy. In crops, it is increasingly important to understand and predict the GM volunteer emergence in subsequent non-GM crops. Theoretical models suggest recruitment from the seedbank over extended periods, but empirical evidence matching these predictions has been scarce. Here, we provide evidence of long-term GM seed persistence in conventional agriculture. Ten years after a trial of GM herbicide-tolerant oilseed rape, emergent seedlings were collected and tested for herbicide tolerance. Seedlings that survived the glufosinate herbicide (15 out of 38 volunteers) tested positive for at least one GM insert. The resulting density was equivalent to 0.01 plants m<sup>-2</sup>, despite complying with volunteer reduction recommendations. These results are important in relation to debating and regulating coexistence of GM and non-GM crops, particularly for planting non-GM crops after GM crops in the same field.**

**Keywords:** volunteer; temporal gene flow; *Brassica napus*; seed; transgene

## 1. INTRODUCTION

Genetic modification (GM) technology makes it possible to engineer organisms with unique trait combinations, and it is currently a challenge to understand the fitness, competitiveness and long-term persistence of such organisms under field conditions (Pilson & Prendeville 2004; Snow *et al.* 2005). In particular, increasing effort is directed towards identifying and predicting the consequences of coexistence between GM and non-GM organisms (Ellstrand 2003; Pilson & Prendeville 2004). Part of the problem with coexistence is that the inserted transgenes disperse in the environment. The processes with which this happens are analogous to non-GM escapees from agriculture (Ellstrand *et al.* 1999; Ellstrand 2003; Begg *et al.* 2006). The spread of GM organisms into non-GM populations may have implications by affecting the purity of non-GM crop and thus the consumer willingness to buy such products of mixed origin (GM Science Review Panel 2003; Snow *et al.* 2005).

In agriculture, management strategies are adopted to reduce the GM volunteer plants (Pekrun *et al.* 1998; GM Science Review Panel 2003). Despite these

measures, models now predict problems with volunteers from the seedbank, making it difficult to achieve GM contents below the 0.9% EU threshold (Lutman *et al.* 2005; Begg *et al.* 2006).

In oilseed rape (OSR), *Brassica napus* L., experiments on gene flow between crop varieties are still scarce (Légère 2005). Analysing temporal gene flow through volunteer recruitment from the seedbank is problematic in OSR because it is grown in a crop cycle with a span of only a few years (but see Simard *et al.* 2002; Lutman *et al.* 2005; Messean *et al.* 2007). Long-term GM OSR seed persistence has instead been investigated indirectly by, for example, sowing non-GM seeds in cultivated or non-cultivated soil (Pekrun *et al.* 1998; Lutman *et al.* 2003), seed burial (Schlink 1998), adding seeds to semi-natural habitats (Crawley *et al.* 1993, 2001) or molecular investigations of feral populations (Pessel *et al.* 2001).

In general, studies suggest that the majority of seeds disappear from the seedbank within 2 years (Crawley *et al.* 1993, 2001; Simard *et al.* 2002, 2005). Recent models predict over 10-year OSR seed persistence in cultivated soil (Lutman *et al.* 2005; Begg *et al.* 2006), but empirical studies confirming this have not been available (but see Messean *et al.* 2007). Here, we investigated the long-term GM seed persistence in a conventionally tilled system. Ten years after a GM OSR trial in Sweden, a field was surveyed and potential GM volunteers detected. Using a combination of crop use history, herbicide application and molecular analysis, we investigated the presence of descendants from the GM field trial.

## 2. MATERIAL AND METHODS

### (a) Trial with GM OSR in 1995

In 1995, Plant Genetic Systems N.V. performed a field trial at Lönnstorp Experimental Farm, Sweden (13°06' E, 55°40' N) with three transgenic OSR lines (OECD record number SWE95-005). All these three lines were F<sub>1</sub> hybrids between a male sterile line and a fertility restorer line (*barnase* and *barstar* transgenes, respectively; table 1) and carried the transgene *bar*, which confers resistance to the herbicide glufosinate. Four 2 × 14 m subplots of each hybrid line were sown in a 30 × 40 m trial plot. The remainder of the plot and a 6–10 m border were sown with conventional OSR. The trial was harvested in autumn 1995 (figure 1), with seed loss prevented as much as possible. Shallow stubble tillage was performed twice to encourage germination before delayed ploughing in late November. Rainfall was sufficient for OSR germination (figure 1).

### (b) Field management 1996–2005

Between 1996 and 2005, wheat, barley and sugar beet were grown (figure 1) in the trial plot. The field was ploughed every year and harrowed before sowing. Volunteer occurrence during 1996–2005 was controlled by herbicides (a mixture of the herbicides tribenuron (Express, DuPont Agro) and fluroxypyr (Starane, Dow Agro-Sciences)) and subsequent visual inspections. During the first 2 years after harvest, the field was controlled by the Swedish Board of Agriculture, and for two additional years farm staff was under obligation by the Swedish Board of Agriculture to control volunteer rape in the field. During 1996–2005, farm staff controlled any volunteers observed with herbicides before flowering. Subsequent inspections did not detect new volunteers.

### (c) Analysis of OSR volunteers

Despite volunteer control, volunteers were still observed after 10 years. After harrowing in spring 2005, two persons searched the trial field for 3 hours, collecting all detected volunteers. Volunteers were planted in pots and kept outdoors. As controls we included conventional (Vasaholm: 13°27' E, 55°38' N) and feral (Revinge: 13°25' E, 55°41' N) OSR plants. Unfortunately, at that time we did not have access to glufosinate-tolerant control plants. After 19 days, plants were hand sprayed with glufosinate herbicide (2% Basta). Spraying was repeated after three weeks. Numbers of surviving plants were recorded after spraying.

Table 1. The plant genetic systems N.V. (PGS) transgenic lines grown in the trial of glufosinate herbicide (Basta)-resistant oilseed rape in 1995. (Identities of the transgene-carrying plasmids are given within parentheses.)

PGS hybrids	male sterile line <i>barnase</i>		restorer line <i>barstar</i>
PGS hybrid 1:	Ms1 (pTTM8RE)	×	Rf2 (pTVE74RE)
PGS hybrid 2:	Ms5 (pTCO46RE)	×	Rf2 (pTVE74RE)
PGS1:	Ms1 (pTTM8RE)	×	Rf1 (pTVE74RE)

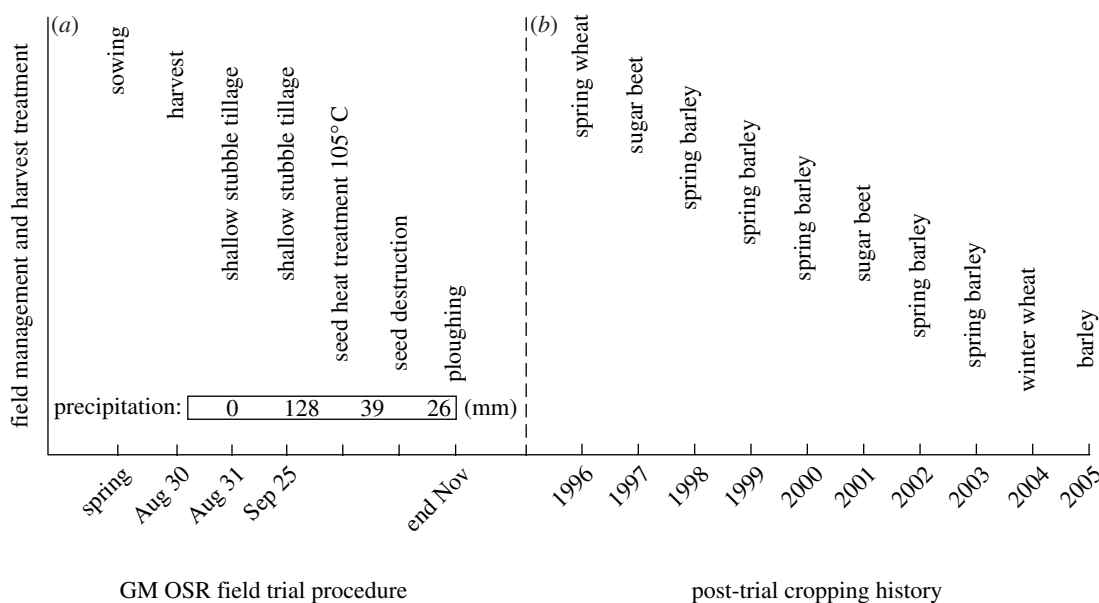


Figure 1. (a) Management of the GM Basta-tolerant OSR field trial in 1995, and (b) crops grown at the trial site from 1996 to 2005. Numbers in horizontal bar denote post-harvest monthly precipitation (mm) from August 30 to November 30.

Table 2. Survival of volunteer, crop and feral oilseed rape after glufosinate herbicide (Basta) application, and the frequencies of molecular markers for the transgenes *barnase* and/or *barstar* in the 15 surviving volunteers.

plant type	number of plants	number of plants surviving	plants positive for		
			<i>barstar</i>	<i>barnase</i>	<i>barstar</i> + <i>barnase</i>
volunteer	48	15	12	1	2
non-GM crop	67	0	—	—	—
non-GM feral oilseed rape	21	0	—	—	—

Molecular analysis of surviving plants was performed to identify the occurrence of GM lines. One fresh leaf was collected from surviving plants, stored at  $-20^{\circ}\text{C}$  and DNA was extracted using the DNeasy standard procedure (Qiagen). PCR analysis was performed with primers (23–24 mers) specific to the inserted constructs, *barstar* and *barnase*, which are genes for male sterility (*barnase*) or its restorer (*barstar*). Positive and negative control plants were included in the PCR analysis. The PCR temperature cycle was  $95^{\circ}\text{C}$  per 4 min (1 cycle),  $95^{\circ}\text{C}$  per 1 min,  $57^{\circ}\text{C}$  per 1 min,  $72^{\circ}\text{C}$  per 2 min (5 cycles),  $92^{\circ}\text{C}$  per 30 s,  $57^{\circ}\text{C}$  per 30 s,  $72^{\circ}\text{C}$  per 2 min (25 cycles) and finally  $72^{\circ}\text{C}$  per 10 min. Products were visualized with ethidium bromide on agarose gels. Control plants with the *barnase* and *barstar* constructs were obtained from other sources and included in the analysis.

In January 2006, 40 soil samples (2.5 cm in diameter and approx. 25 cm deep) were randomly collected in the former trial field. Samples were stored at  $2^{\circ}\text{C}$  until sown in trays and placed in a greenhouse. The soil was watered whenever necessary and mixed several times to encourage germination (Lutman *et al.* 2003).

### 3. RESULTS

We found 38 volunteer OSR plants in the former trial plot. Fifteen volunteers survived Basta application while none of the controls did (table 2).

The difference in survival was highly significant (Fisher's exact probability test,  $p < 0.0001$ ). All surviving OSR volunteers were positive for at least one, in two cases both, of the inserted genes (table 2, figure 2), thus clearly demonstrating a link between the GM OSR trial in 1995 and the volunteer population 10 years later. The density of GM OSR was  $0.012 \text{ plants m}^{-2}$ , and for all volunteers  $0.04 \text{ plants m}^{-2}$ . Seedlings from seven weed species germinated, but no OSR seedlings germinated.

### 4. DISCUSSION

Although temporal gene flow has been suggested to make the largest contribution to the mixing of OSR varieties in agricultural fields (Begg *et al.* 2006), data on long-term seed persistence in conventionally tilled fields are rare. Available studies demonstrate that OSR persists for 5–6 or up to 8 years in agricultural fields (Simard *et al.* 2002; Lutman *et al.* 2005;

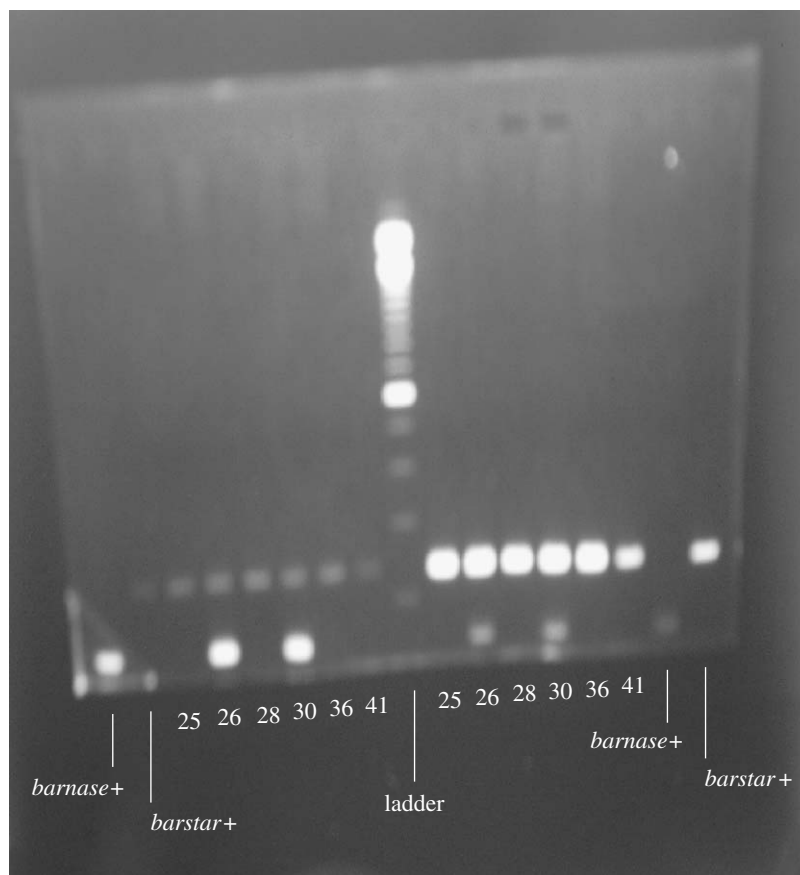


Figure 2. OSR volunteers 25, 26, 28, 30, 36 and 41 tested for *barnase* (left part of the gel) and *barstar* (right part of the gel) genes: *barnase+* denotes the *barnase* positive control and *barstar+* the *barstar* positive control. Only volunteers 26 and 30 were positive for *barnase*, but all volunteers (on this gel) were positive for *barstar*.

Gruber *et al.* 2007; Messean *et al.* 2007). Our finding of transgenic volunteers 10 years after cultivation contributes additional evidence that GM OSR can persist for considerable time in agricultural fields. The data appear to be consistent with theoretical predictions (Lutman *et al.* 2005; Begg *et al.* 2006).

Seed loss at harvest, shallow cultivation and timing of ploughing have been identified as key factors to prevent incorporation of seeds into the seedbank (Begg *et al.* 2006). In the field trial, a protocol based on scientific advice was set up by the Swedish Board of Agriculture to prevent the occurrence of volunteer GM plants, and the trial was meticulously controlled. The shallow stubble tillage performed encourages OSR germination (Pekrun *et al.* 1998), and late ploughing eliminates seedlings (figure 1). Incorporation of seeds into the seedbank was therefore minimized as much as possible.

In the years after the GM field trial, OSR was not grown at the site and volunteers were controlled with herbicides and subsequent observations, so that substantial seed return did not occur. Although every attempt was made to eliminate volunteers, there is a risk that low levels of seed return were possible due to overlooked volunteers. No other trials with GM OSR have been performed at Lönnpstorp farm. The extensive control of volunteers makes it possible to conclude that the GM volunteers collected in 2005 most probably were recruited from 10-year old seeds, and provides evidence of long-term GM OSR seed persistence in conventional agriculture. In the year of cultivation, the three hybrid lines probably self-pollinated,

hybridized with each other and with the non-GM OSR plants in the trial plot. It is known that restoration of fertility in  $F_1$  lines can be incomplete, and pollen-producing plants had either both the *barnase* and the *barstar* or only the *barstar* (Bisht *et al.* 2004). This could be why the majority of plants had only the *barstar* gene. As only about one-quarter of the trial area ( $336 \text{ m}^2/1200 \text{ m}^2$ ) was sown with GM lines, volunteer density in commercial fields would probably be higher than the  $0.01 \text{ plants m}^{-2}$  reported here. Also, volunteer control in real fields would never be as strict as in this trial. This finding of volunteers, despite labour intensive control for 10 years, supports previous suggestions (Lutman *et al.* 2005; Begg *et al.* 2006; Messean *et al.* 2007) that volunteer OSR needs to be carefully managed in order for non-GM crops to be planted after GM crops.

We thank Hanna Pettersson for field assistance, Helena Aronsson, SLU, for precipitation data and the Swedish Board of Agriculture for trial information. The manuscript benefited from the insightful comments from the two anonymous referees. T.D'H. was funded by the Swedish Research Council FORMAS and K&A Wallenberg Foundation, and L.B.P. by the Swedish Research Council. This study was partly financed by the EU project SIGMEA.

Begg, G. S., Hockaday, S., Mcnicol, J. W., Askew, M. & Squire, G. R. 2006 Modelling the persistence of volunteer oilseed rape (*Brassica Napus*). *Ecol. Model.* **198**, 195–207. (doi:10.1016/j.ecolmodel.2006.04.025)



- 385 Bisht, N. C., Jagannath, A., Gupta, V., Burma, P. K. & Pental, D. 2004 A two gene two promoter system  
386 for enhanced expression of a restorer gene (*barstar*)  
387 and development of improved fertility restorer lines  
388 for hybrid seed production in crop plants. *Mol. Breed.* **14**,  
389 129–144. (doi:10.1023/B:MOLB.0000038002.45312.08)
- 390 Crawley, M. J., Hails, R. S., Rees, M., Kohn, D. D. &  
391 Buxton, J. 1993 Ecology of transgenic oilseed rape in  
392 natural habitats. *Nature* **363**, 620–624. (doi:10.1038/  
393 363620a0)
- 394 Crawley, M. J., Brown, S. L., Hails, R. S., Kohn, D. D. &  
395 Rees, M. 2001 Transgenic crops in natural habitats.  
396 *Nature* **409**, 682–683. (doi:10.1038/35055621)
- 397 Ellstrand, N. C. 2003 *Dangerous liaisons? When cultivated*  
398 *plants mate with their wild relatives*. Baltimore, MA: Johns  
399 Hopkins University Press.
- 400 Ellstrand, N. C., Prentice, H. C. & Hancock, J. F. 1999  
401 Gene flow and introgression from domesticated plants  
402 into their wild relatives. *Annu. Rev. Ecol. Syst.* **30**,  
403 539–563. (doi:10.1146/annurev.ecolsys.30.1.539)
- 404 GM Science Review Panel 2003 GM science review  
405 (first report): an open review of the science relevant  
406 to GM crops and food based on interests and concerns  
407 of the public. UK Government: London, UK. ([http://](http://www.gmsciencedebate.org.uk/report/pdf/gmsci_report1-full.pdf)  
408 [www.gmsciencedebate.org.uk/report/pdf/gmsci\\_report1-](http://www.gmsciencedebate.org.uk/report/pdf/gmsci_report1-full.pdf)  
409 [full.pdf](http://www.gmsciencedebate.org.uk/report/pdf/gmsci_report1-full.pdf))
- 410 Gruber, S., Lutman, P., Squire, G., Roller, A., Albrecht, H.  
411 & Lecomte, J. 2007 Using the SIGMEA data base to  
412 provide an overview of the persistence of seeds of oilseed  
413 rape in the context of the coexistence of GM and  
414 conventional crops. In *Proc. GMCC07, Seville, Spain,*  
415 *November 2007*, pp. 261–262.
- 416 Légère, A. 2005 Risks and consequences of gene flow from  
417 herbicide-resistant crops: canola (*Brassica Napus* L.) as a  
418 case study. *Pest Manag. Sci.* **61**, 292–300. (doi:10.1002/  
419 ps.975)
- 420  
421  
422  
423  
424  
425  
426  
427  
428  
429  
430  
431  
432  
433  
434  
435  
436  
437  
438  
439  
440  
441  
442  
443  
444  
445  
446  
447  
448
- Lutman, P. J. W., Freeman, S. E. & Pekrun, C. 2003 The  
449 long-term persistence of seeds of oilseed rape (*Brassica*  
450 *Napus*) in arable fields. *J. Agr. Sci.* **141**, 231–240.  
451 (doi:10.1017/S0021859603003575)
- Lutman, P. J. W. *et al.* 2005 Persistence of seeds from crops  
452 of conventional and herbicide tolerant oilseed rape  
453 (*Brassica Napus*). *Proc. R. Soc. B* **272**, 1909–1915.  
454 (doi:10.1098/rspb.2005.3166)
- Messean, A., Sausse, C., Gasquez, J. & Darmency, H. 2007  
455 Occurrence of genetically modified oilseed rape seeds in  
456 the harvest of subsequent conventional oilseed rape over  
457 time. *Eur. J. Agron.* **27**, 115–122. (doi:10.1016/j.eja.  
458 2007.02.009)
- Pekrun, C., Hewitt, J. D. J. & Lutman, P. J. W. 1998  
459 Cultural control of volunteer oilseed rape (*Brassica*  
460 *Napus*). *J. Agr. Sci.* **130**, 155–163. (doi:10.1017/  
461 S0021859697005169)
- Pessel, F. D., Lecomte, J., Emeriau, V., Krouti, M., Messean,  
462 A. & Gouyon, P. H. 2001 Persistence of oilseed rape  
463 (*Brassica Napus* L.) outside of cultivated fields. *Theor. Appl.*  
464 *Genet.* **102**, 841–846. (doi:10.1007/S001220100583)
- Pilson, D. & Prendeville, H. R. 2004 Ecological effects of  
465 transgenic crops and the escape of transgenes into wild  
466 populations. *Annu. Rev. Ecol. Syst.* **35**, 149–174. (doi:10.  
467 1146/annurev.ecolsys.34.011802.132406)
- Schlink, S. 1998 10 years survival of rape seed (*Brassica*  
468 *Napus* L.) in soil. *Z. Pflanzenk. Pflanzen.* **XVI**, 169–172.  
469
- Simard, M.-J., Légère, A., Pageau, D., Lajeunesse, J. &  
470 Warwick, S. 2002 The frequency and persistence of  
471 volunteer canola (*Brassica Napus*) in Québec cropping  
472 systems. *Weed Technol.* **16**, 433–439. (doi:10.1614/0890-  
473 037X(2002)016[0433:TFAPOV]2.0.CO;2)
- Snow, A. A., Andow, D. A., Gepts, P., Hallerman, E. M.,  
474 Power, A., Tiedje, J. M. & Wolfenbarger, L. L. 2005  
475 Genetically engineered organisms and the environment:  
476 current status and recommendations. *Ecol. Appl.* **15**,  
477 377–404. (doi:10.1890/04-0539)
- 478  
479  
480  
481  
482  
483  
484  
485  
486  
487  
488  
489  
490  
491  
492  
493  
494  
495  
496  
497  
498  
499  
500  
501  
502  
503  
504  
505  
506  
507  
508  
509  
510  
511  
512

513	<b>Author Queries</b>	577
514	<i>JOB NUMBER:</i> 20080123	578
515	<i>JOURNAL:</i> RSBL	579
516		580
517		581
518	Q1 In figure 1, the x-axis label has been changed from	582
519	'GMO' to 'GM OSR' to match the legend. Is it ok?	583
520	Please confirm.	584
521	Q2 We have edited the sentence 'Volunteers 26 and 30	585
522	were positive...' to 'Only volunteers 26 and 30 were	586
523	positive...' Please check and confirm our edit.	587
524	Q3 We have made a change to the sentence 'These	588
525	results are important in relation...' Please review our	589
526	edit.	590
527	Q4 Both 'genetically modified' and 'Genetic modification'	591
528	have the same abbreviation 'GM'. Please confirm	592
529	which one to be followed.	593
530	Q5 Reference Simard et al. (2005) has been cited in text	594
531	but not provided in the list. Please supply reference	595
532	details or delete the reference citation from the text.	596
533	Q6 We have made a change to the sentence 'Between	597
534	1996 and 2005...' Please review our edit.	598
535	Q7 Please check and confirm the edit of the sentence	599
536	'The PCR temperature cycle was 95°C per 4 min...'	600
537	Q8 We have changed 'occurred' to 'germinated' in the	601
538	sentence 'Seedlings from seven weed species germi-	602
539	nated...' Please check and confirm our edit.	603
540	Q9 Please check and confirm the edit of the sentence	604
541	'Available studies demonstrate...'	605
542	Q10 The term 'seed bank' has been changed to 'seed-	606
543	bank'. Is it ok? Please confirm.	607
544	Q11 Please check and confirm the edit of the sentence	608
545	'This could be why the majority of...'	609
546		610
547		611
548		612
549		613
550		614
551		615
552		616
553		617
554		618
555		619
556		620
557		621
558		622
559		623
560		624
561		625
562		626
563		627
564		628
565		629
566		630
567		631
568		632
569		633
570		634
571		635
572		636
573		637
574		638
575		639
576		640